

Loadcentres



Construction

Loadbank Panel Boards have an unique modular construction with incoming & outgoing MCCBs housed in an enclosure forming the basic module. Cable way module, metering module and MCB module have to be added to the basic module to have a complete loadbank system to suit the specific requirement.

Basic Module

The basic module comprises of two sections, namely :

Incoming Module

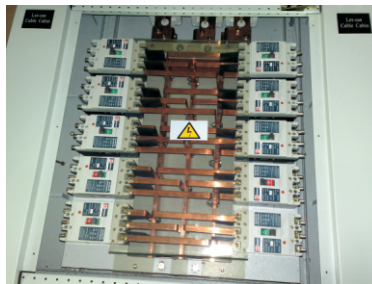
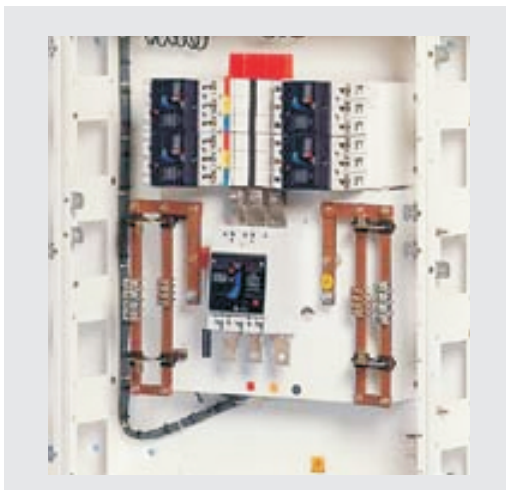
The incoming module accommodates single MCCBs upto 400A in G frame panel boards and upto 800A in A Frame panel boards. They are all supplied with their own dedicated set of preformed copper interconnections.

Outgoing Module

They are available with 2, 4, 6, 8, 12 or 16 way outgoing circuits suitable for mounting single pole or three pole 'G' Frame MCCBs upto 125A in 'G' frame panel boards and for mounting single pole and three pole 'A' frame MCCBs upto 250A in 'A' frame panel boards. The bus bars are fully rated and are completely shielded by transparent polycarbonate shrouds with the extension tags and metal shielding removed from one end. Adequate space is provided for terminating the cable onto the MCCBs.

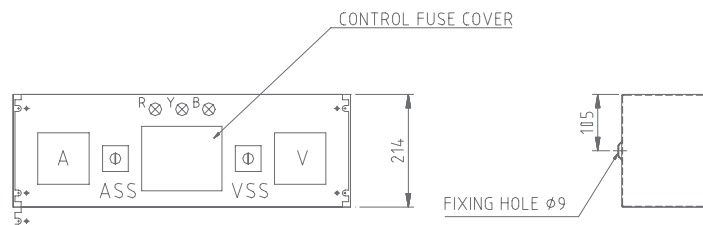
Cable Way Module

Cableways can be added on either side of the basic module for termination of incoming & outgoing MCCBs. The cable way selection is simply determined by adding together the modular height of the final layout & choosing cableways to match. The vertical insulated partition kit allows shielding between the shared face of a cableway and the basic module.



G Frame Panel Boards - 250A / 400A
(A/C Frame incomer, G Frame outgoing)

Same for TP & FP



A Frame Panel Boards - 400A / 800A
(C Frame incomer, A Frame outgoing)

